

**SUZ12 Antibody (Center)**  
**Purified Rabbit Polyclonal Antibody (Pab)**  
**Catalog # AP21396c**

**Specification**

---

**SUZ12 Antibody (Center) - Product Information**

Application	WB,E
Primary Accession	<a href="#">Q15022</a>
Reactivity	Human, Mouse
Host	Rabbit
Clonality	polyclonal
Isotype	Rabbit IgG
Calculated MW	83055

**SUZ12 Antibody (Center) - Additional Information**

**Gene ID** 23512

**Other Names**

Polycomb protein SUZ12, Chromatin precipitated E2F target 9 protein, ChET 9 protein, Joined to JAZF1 protein, Suppressor of zeste 12 protein homolog, SUZ12, CHET9, JJAZ1, KIAA0160

**Target/Specificity**

This SUZ12 antibody is generated from a rabbit immunized with a KLH conjugated synthetic peptide between 375-408 amino acids from the Central region of human SUZ12.

**Dilution**

WB~~1:2000

E~~Use at an assay dependent concentration.

**Format**

Purified polyclonal antibody supplied in PBS with 0.09% (W/V) sodium azide. This antibody is purified through a protein A column, followed by peptide affinity purification.

**Storage**

Maintain refrigerated at 2-8°C for up to 2 weeks. For long term storage store at -20°C in small aliquots to prevent freeze-thaw cycles.

**Precautions**

SUZ12 Antibody (Center) is for research use only and not for use in diagnostic or therapeutic procedures.

**SUZ12 Antibody (Center) - Protein Information**

**Name** SUZ12

**Synonyms** CHET9, JJAZ1, KIAA0160

**Function** Polycomb group (PcG) protein. Component of the PRC2 complex, which methylates 'Lys-9' (H3K9me) and 'Lys-27' (H3K27me) of histone H3, leading to transcriptional repression of the affected target gene (PubMed:[15225548](#), PubMed:[15231737](#), PubMed:[15385962](#), PubMed:[16618801](#), PubMed:[17344414](#), PubMed:[18285464](#), PubMed:[28229514](#), PubMed:[29499137](#), PubMed:[31959557](#)). The PRC2 complex may also serve as a recruiting platform for DNA methyltransferases, thereby linking two epigenetic repression systems (PubMed:[12351676](#), PubMed:[12435631](#), PubMed:[15099518](#), PubMed:[15225548](#), PubMed:[15385962](#), PubMed:[15684044](#), PubMed:[16431907](#), PubMed:[18086877](#), PubMed:[18285464](#)). Genes repressed by the PRC2 complex include HOXC8, HOXA9, MYT1 and CDKN2A (PubMed:[15231737](#), PubMed:[16618801](#), PubMed:[17200670](#), PubMed:[31959557](#)).

#### Cellular Location

Nucleus Note=Localizes to chromatin as part of the PRC2 complex

#### Tissue Location

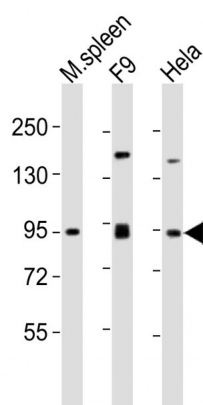
Overexpressed in breast and colon cancer.

### SUZ12 Antibody (Center) - Protocols

Provided below are standard protocols that you may find useful for product applications.

- [Western Blot](#)
- [Blocking Peptides](#)
- [Dot Blot](#)
- [Immunohistochemistry](#)
- [Immunofluorescence](#)
- [Immunoprecipitation](#)
- [Flow Cytometry](#)
- [Cell Culture](#)

### SUZ12 Antibody (Center) - Images



All lanes : Anti-SUZ12 Antibody (Center) at 1:2000 dilution Lane 1: mouse spleen lysates Lane 2: F9 whole cell lysates Lane 3: HeLa whole cell lysates Lysates/proteins at 20 µg per lane. Secondary Goat Anti-Rabbit IgG, (H+L), Peroxidase conjugated at 1/10000 dilution Predicted band size : 83 kDa Blocking/Dilution buffer: 5% NFD/MTBST.

**SUZ12 Antibody (Center) - Background**

Polycomb group (PcG) protein. Component of the PRC2/EED- EZH2 complex, which methylates 'Lys-9' (H3K9me) and 'Lys-27' (H3K27me) of histone H3, leading to transcriptional repression of the affected target gene. The PRC2/EED-EZH2 complex may also serve as a recruiting platform for DNA methyltransferases, thereby linking two epigenetic repression systems. Genes repressed by the PRC2/EED-EZH2 complex include HOXC8, HOXA9, MYT1 and CDKN2A.

**SUZ12 Antibody (Center) - References**

Nagase T.,et al.DNA Res. 2:167-174(1995).  
Koontz J.I.,et al.Proc. Natl. Acad. Sci. U.S.A. 98:6348-6353(2001).  
Weinmann A.S.,et al.Mol. Cell. Biol. 21:6820-6832(2001).  
Kuzmichev A.,et al.Genes Dev. 16:2893-2905(2002).  
Cao R.,et al.Science 298:1039-1043(2002).